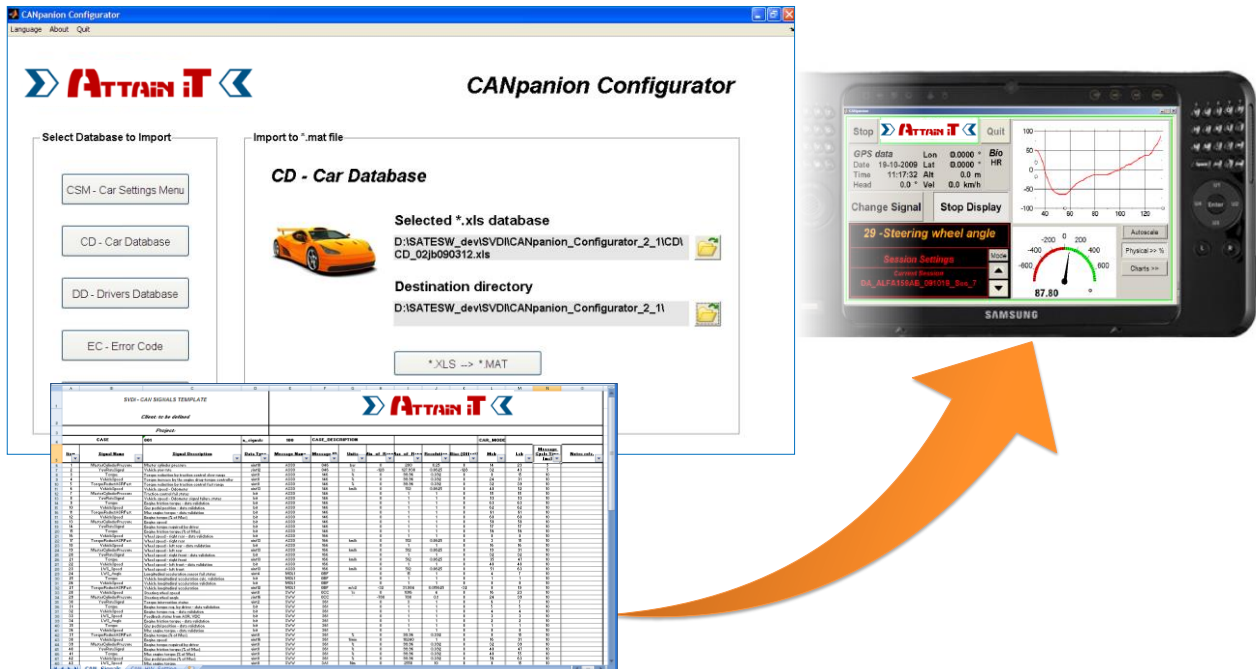




CANpanionConfigurator™

TOOL FOR THE GENERATION OF CUSTOM CONFIGURATION PROFILES
FOR THE CANpanion™ MAIN PRODUCT



OVERVIEW

CANpanionConfigurator™ is a desktop application for the generation of custom configuration profiles for the **CANpanion™** platform.

The user can easily customize the settings into MS Excel® databases, generate various configuration files with **CANpanionConfigurator™** (e.g. for different car models) and upload them into **CANpanion™** software.

SOFTWARE DESCRIPTION

CANpanionConfigurator™ is a user friendly application developed in MATLAB® environment for the generation of custom configuration profiles through the conversion of MS Excel® databases into compact MATLAB® files that can be loaded by the **CANpanion™** software. This architecture allows:

- customization of configuration settings through a user friendly interface as MS Excel®
- customization of configuration profiles on a desktop computer and sharing on users **CANpanion™** platforms (e.g. test drivers).

- easily and robust managing of different configuration profile

CONFIGURATION SETTINGS

CANpanionConfigurator™ allows the customization of the main HW and SW settings of the **CANpanion™**, which are organized into different MS Excel® databases:

- **CD – Car Database:** car models list (each one with a specific identifier) on which the **CANpanion™** platform will be used
- **DD – Driver Database:** list of drivers enabled to use **CANpanion™** platform on the car
- **MS – Mail Settings:** HSDPA/UMTS, WiFi and LAN communication settings for logged data sending
- **CSM – Car Settings Menu:** HW settings for CAN/USB or CAN/WLAN interface device (bit rate, HW channels, etc.) and CAN signals specification.

The CSM databases contain settings which are specific for the CAN network of the vehicle and they are associated to the car model/s defined into the Car Database.

CUSTOM CAN SIGNALS SPECIFICATION

A powerful feature of **CANpanionConfigurator™** is the possibility to create, in the CSM database, a custom CAN signals specification as an alternative to the CAN database in *.dbc format (also supported by the **CANpanion™**).

The user can define a custom list of CAN signals to be logged, specifying the CAN message IDs and all the information required for signals decoding:

- units
- range

- resolution
- bias
- most and less significant bit.

SYSTEM REQUIREMENTS

Windows XP

MS Excel®

The image shows the CANpanion Configurator software interface. The top part is a spreadsheet-like table with columns for Item, Signal Name, Signal Description, Data Type, Message Name, Message ID, Units, Min of Range, Max of Range, Resolution, Bias (Offset), Msb, Lsb, Message Cycle Time (ms), and Notes refs. The table lists various signals such as CylinderPressure, AirTemp, Gear, LongAcceleration, LstAcceleration, YawRate, TransmissionTemperature, LWS_Speed, LWS_Angle, VehicleSpeed, BrakePedal, Clutch, EngineTorque, EngineSpeed, TorqueReduct, ABS, ASRActive, ESPActive, RH, LH, RV, LF, GasPedalPosition, GasPedalGradieat, ThrottlePosition, FL_Pos, FR_Pos, RL_Pos, RR_Pos, FL_Val, FR_Val, RL_Val, and RR_Val.

The bottom part of the image shows the main configuration window of the software. It features the Attain IT logo and the title "CANpanion Configurator". The window is divided into two main sections: "Select Database to Import" and "Import to *.mat file".

Select Database to Import:

- CSM - Car Settings Menu
- CD - Car Database
- DD - Drivers Database
- EC - Error Code
- MS - Mail Settings

Import to *.mat file:

CSM - Car Settings Menu

Selected *.xls database: CSM_TEST_TTYRE_00jb090123.xls

Destination directory: D:\SATESW_dev\SVDI\CANpanion_Configurator_2_0\

A button labeled "*XLS --> *.MAT" is visible at the bottom of the configuration window.

Attain IT S.r.l.

Santa Croce 664/a, 30135 VENICE (ITALY)

Tel.: +39 329 – 0095712, +39 041 – 2757634

fax: +39 041 – 8871148, +39 041 – 2757633

Email: info@attainit.eu

www.attainit.eu